



Asset Mapping Module

Manage Your Assets More Efficiently



✓ Challenges

✓ How Asset Mapping Module Helps

✓ Digital HRMS Asset Mapping Suite

✓ Asset Mapping Process Outline

✓ Asset Mapping Module Building Blocks

✓ Role-Based Access

✓ Key Features

✓ Our Select Clientele

✓ Industries

✓ Mobile App

✓ About Us

CHALLENGES

Key Asset Mapping Challenges Faced by Enterprises.

Using The Manual Process is Error-Prone

Taking Care of Huge Amounts of Data

Making Assets Visible

Consolidation The Reports & Checking Their Accuracy

Processing The Asset Recovery on Separation

Retaining Up-to-Date Asset Records

Handling The Confidentiality of Data

Inorganized Data Across Multiple Departments

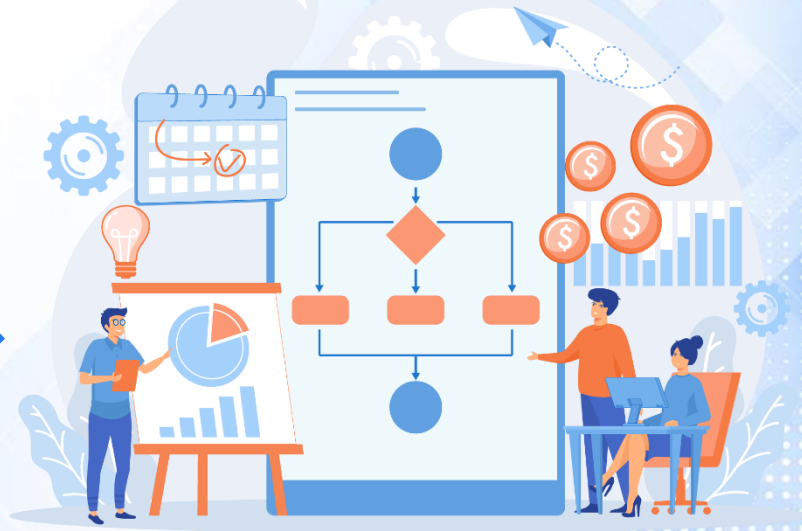
Maintaining the Paper Documents After Filing

Facing Difficulty in Paper Bound Acknowledgement Process

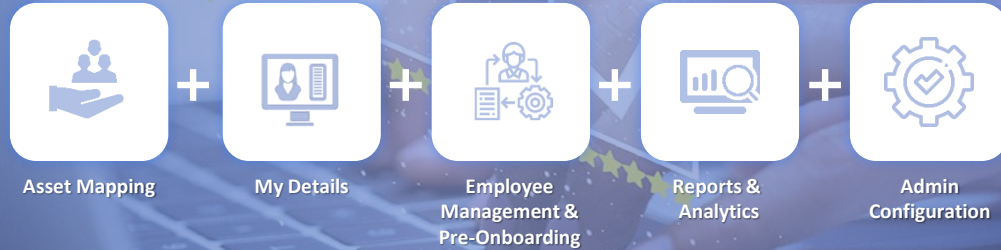
HOW THE ASSET MAPPING PLATFORM HELPS?

An automated asset mapping module assists in managing assets allocated to employees.

- Paperless asset management.
- Centralized data maintenance.
- Allocate / Deallocate assets to employees.
- Better time management.
- Receive prompt notifications, reminders, and updates.
- Generate employee-wise asset reports.
- Export data or reports to PDF or Excel sheets.
- Reminders, automated processes, instant access, history, and quick view are available.



DIGITAL HRMS ASSET MAPPING SUITE



Get the Flexibility to Choose More Modules & Build your Customized Platform for every HR function.



Survey



Self Service



Leave & Attendance



Training



Timeport



Policy



Violations & Occurrence



Recruitment



Performance Assessment



Resource Allocation



Separation



Travel



Conference Room Booking



Expense & Reimbursements



User Manual



Mobile App



Payroll

ASSET MAPPING PROCESS OUTLINE



ASSET MAPPING MODULE BUILDING BLOCKS



Asset Mapping
Module

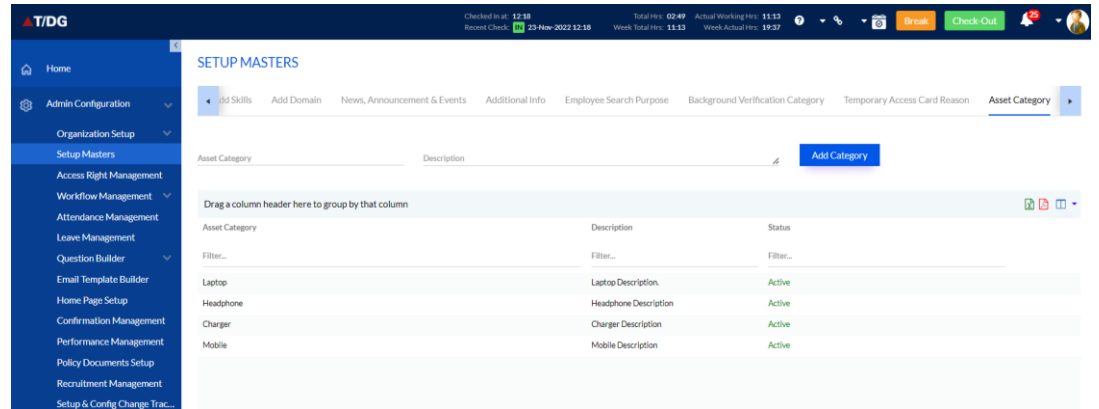
Admin

Asset Mapping

Asset Reports

Admin Dashboard

- Admin /HR can add an Asset category
- Admin/HR can edit, delete created asset category



The screenshot displays the TDG Admin Dashboard. The top navigation bar includes the TDG logo, a clock showing 12:58, and various utility icons like a search, refresh, and user profile. The main content area is titled 'SETUP MASTERS' and features a breadcrumb trail: 'All Skills > Add Domain > News, Announcement & Events > Additional Info > Employee Search Purpose > Background Verification Category > Temporary Access Card Reason > Asset Category'. Below the breadcrumb is a table with columns for 'Asset Category', 'Description', and 'Status'. A blue 'Add Category' button is positioned to the right of the table. The table contains the following data:

Asset Category	Description	Status
Laptop	Laptop Description	Active
Headphone	Headphone Description	Active
Charger	Charger Description	Active
Mobile	Mobile Description	Active

Asset Mapping

The screenshot displays the 'Asset Mapping' interface in the T/DG system. The top navigation bar includes 'Recruitment', 'Resource Allocation', 'Performance Assessment', 'Policy Documents', 'Travel', 'Expense & Reimbursement', 'LMS', 'Conference Room Booking', 'Report to & Analytics', 'Separation', 'Payroll', 'Asset Mapping', and 'Client Onboarding'. The main content area shows a table of employees with columns for Emp ID, Emp Name, BU/Dept, Designation, Transaction Date, Allocated Asset, and DeAllocated Asset. The table contains 7 records.

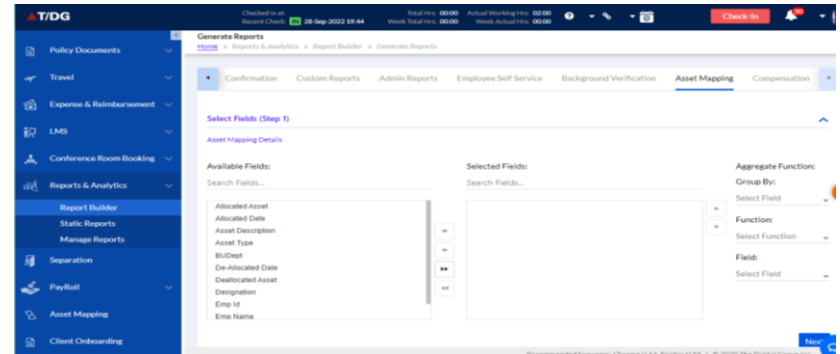
Emp ID	Emp Name	BU/Dept	Designation	Transaction Date	Allocated Asset	DeAllocated Asset
45453	Sural Kishor (45453)	IT	Software Engineer	08-Jun-2022	2	0
00009	Pooja Mishra (00009)	NBA	Manager	13-Mar-2022	4	0
00008	Aksh Sharma (00008)	Norton	Manager	06-Apr-2022	1	0
00004	Sunil Jindal (00004)	Norton	QA Engineer	10-Mar-2022	1	0
00003	Bhivangi Srivastava (00003)	HRMS	Manager	10-Mar-2022	1	0
00002	Abhinav Shukla (00002)	Test - Cloud Customer	Accountant Lead	10-Mar-2022	1	0
00001	Vikram Kumar (00001)	HR	Manager	10-Mar-2022	1	0

Total Records: 7

- Admin/HR can allocate/deallocate assets to a particular employee
- Admin/HR can view employee-wise asset lists under two tabs
 - Active Employees
 - Left Employees
- Filter & Export the Reports in Excel/PDF

Asset Reports

- Admin/HR can create multiple static reports from the Report Builder
- Admin/HR can define & apply multiple filters
- Admin/HR can configure Reports based on their access
- Admin/HR/Employee can view & use configured static asset reports
- User can export the report into Excel, PDF & Word formats



ROLE BASED ACCESS

ADMIN



- Can Add Asset Category
- Can Add Employee Data Masters
- Can Perform Asset Allocation & Deallocation

HR



- Can Manage Employee Data
- Can Perform Asset Allocation & Deallocation

EMPLOYEE



- Can View Allocated & Deallocated Assets

KEY FEATURES

**Convenient Digitalized
Workflow**

**Mapping Assets in
Real-time**

**Comfortable Access
from Anywhere,
Anytime**

Prompt HR Insights

Customized Reports

**All Maintenance
Processes Are
Paperless**

**Simplified of Asset
Recovery After
Separation**

**Integration with 3rd
Party Platforms**

MULTIPLE INDUSTRIES. ONE ASSET SOLUTION



HEALTH CARE



IT / ITES



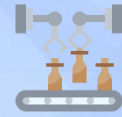
AUTOMOBILE



EDUCATION



REAL ESTATE



MANUFACTURING



RECRUITMENT
AGENCY



CONSULTANCY
FIRM



MEDIA &
PUBLISHING



FACILITY
MANAGEMENT



DEALERS &
DISTRIBUTORS



BANKING & FINANCIAL
SERVICES



HOSPITALITY



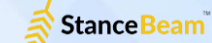
UTILITIES



PHARMA

And many more other industries to which we cater HRMS as a solution.

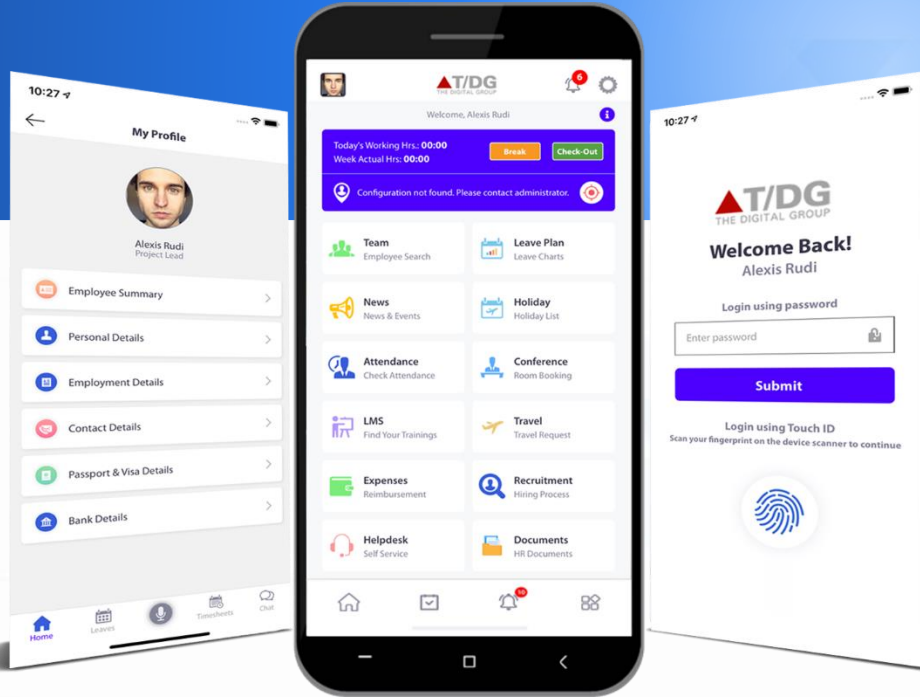
OUR SELECT CLIENTELE



OUR SELECT CLIENTELE



ACCESS THE DIGITAL HRMS ON THE GO



Discover Digital HRMS App
on Google Play & App Store
with advanced features for mobile users.



Geo Fencing



Fingerprint Signature



Chat Bot



Timesheet Recorder



Voice Command



Face Recognition



ABOUT US

Digital HRMS is an one-stop solution for all HR needs. It is a modular customizable HR software platform, developed by T/DG, that empowers your workforce, simplifies your operations and drives your business goals. For more information, visit www.digitalhrms.com

The Digital Group (T/DG) is a MNC and leading provider of a broad range of Information Technology services having software products across domains like HR, enterprise search, automation testing, telehealth, and more. It was incorporated in 1999 and Head-Quartered at Princeton, US. T/DG is a CMMI 5 level company with 1000+ employees and has IT Service Projects & Products as major business. For more information, visit www.thedigitalgroup.com

Awards & Certifications



Digital Group InfoTech Pvt Ltd

Plot No.5, Pyramid Building, Hinjewadi, Rajiv Gandhi
InfoTech Park, Phase 1 Pune, Maharashtra 411057

marketing@digitalhrms.com

sales@digitalhrms.com

+91 20 66532111 | +91 20 66532052

Global Presence

USA | CANADA | INDIA | FIJI | SINGAPORE | VIETNAM

